

national**grid**

Connections Reform Webinar

March 2026

Housekeeping



Microphones

Microphones have been set to 'mute' for this session. This is to minimise background noise for all attendees.



Have a question or piece of feedback?

Please use the Q&A button, located at the top of your screen, to send questions to our panel. We will answer as many as we can during the session.



Session Recording

We are recording our presentations and responses to the pre-submitted Q&A for sharing with our customers.



Session follow up

We will share the presentation, including Q&A, as soon as possible after this session. You will receive it by email and be able to download it from our website:

<https://connections.nationalgrid.co.uk/connections-reform/>



Next webinar

Our next webinar will be held on **Thursday 23 April 2026**. You will be able to register for it shortly through our website

<https://connections.nationalgrid.co.uk/connections-reform/>

Agenda

01/ **Welcome**

David Tuffery

02/ **Progress on Gate 1 ATV and Gate 2 Variation Update**

Joseph Martin

03/ **Policy Updates – CMP 434 & ongoing code modifications**

Kyle Smith

04/ **Technical Limits**

Joseph Martin

05/ **Ofgem Demand Consultation**

Sarah Kenny-Levick

06/ **Curtailment Estimator Tool**

Will Topping

07/ **Q&A**

Panel

To submit a question, please use the Q&A Function.

If you see a question submitted by another attendee which you would like to hear answered, please use the vote button on the question

Webinar Date: 26 March 2026

Welcome

David Tuffery

Head of System Access Reforms

Connections Reform | Key updates and Developments



Key milestones

- NGED are receiving G1 Agreement to Vary (ATV) from NESO – 273 received
- We have started issuing G1 notifications to our customers – 54 issued
- We are still awaiting Protected ATVs from NESO, but have been working closely with NESO to get these issued



How have we been preparing and what happens next?

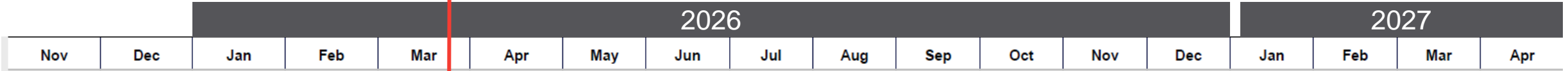
- Preparing everything we can for Protected offers prior to receiving ATVs
- Published our distribution queue ordering methodology used in Connections Reform to provide greater transparency
- Preparing for launch of our self-serve curtailment tool on the 30th March



Demand Connections Reform

- Submitted our Ofgem Demand Connection Reform consultation response
- Started to identify Demand Reform programme

Today



2026/2027 Protected distribution offers - Revised
Early March 2026 - end of May 2026

Gate 2 Phase 1 (2030) distribution offers - Revised
Early July 2026 - mid November 2026

Gate 2 Phase 2 (2035) distribution offers - Revised
Mid October 2026 – mid March 2027

Gate 1 - Self declared, failed to submit, failed initial checks/ detailed checks/queue formation

Gate 1 - Failed to sign Gate 2 offer before offer expiry

Connections Reform | Queue Ordering Methodology

Where can I find it?

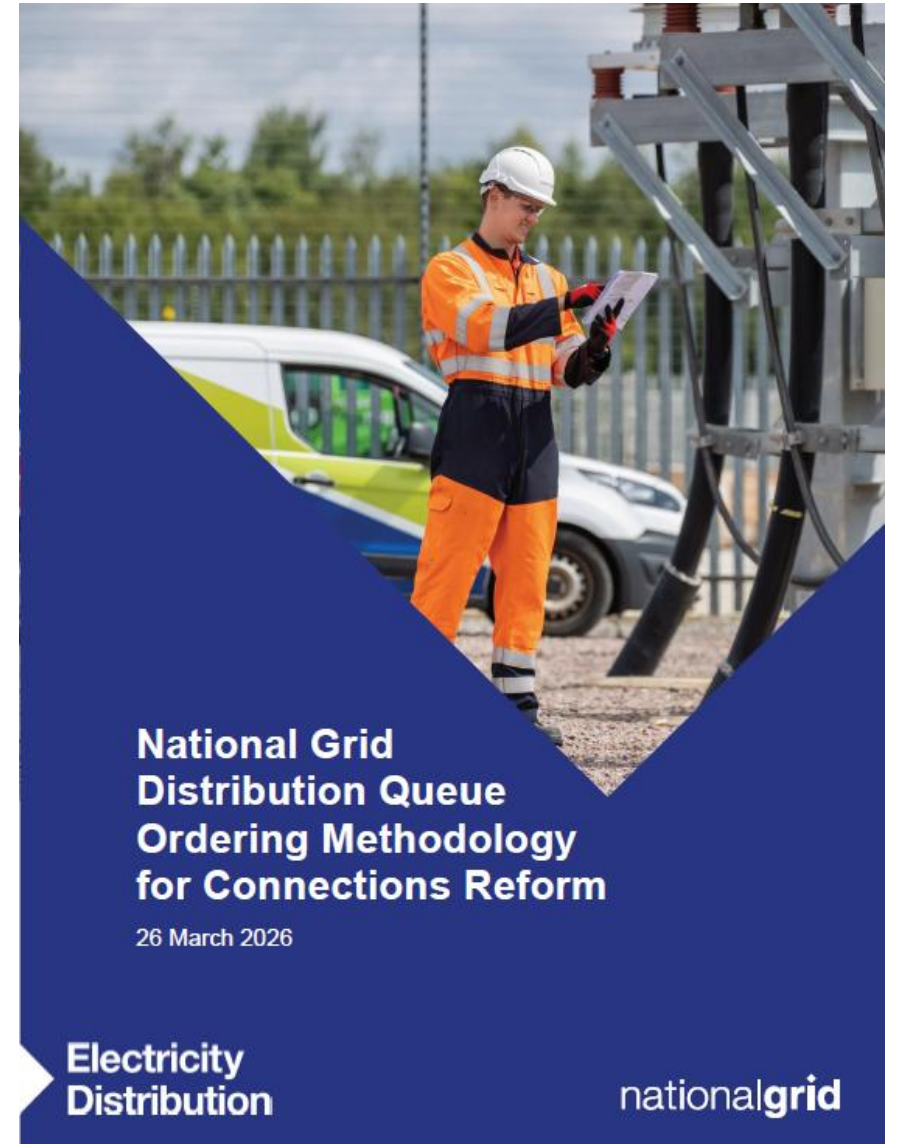
- It is available on our [NGED Connections Reform Website](#)

What does it include?

- Sets out the principles and approaches for how the NESO CNDM Strategic Alignment outcomes will be projected onto the DNO connections pipeline to form the distribution queue
- Also provides clarity on how the following categories are treated:
 - Below Transmission Entry Assessment (TEA)
 - Enduring (CMP434) schemes
 - Demand projects
 - Third Party Works
 - Technical Limits non-firm

Why have we published it?

- Worked extensively with other DNOs to develop the principles in this methodology
- Focused on creating a clear and fair distribution queue ordering approach for all projects/connections, regardless of if they are in scope for Connections Reform



Have your say on the future of your local electricity network

South West

▶ **Exeter**

Sandy Park Stadium

Tue 14 April 2026

South Wales

▶ **Cardiff**

Cardiff City Stadium

Wed 15 April 2026

West Midlands

▶ **Birmingham**

Villa Park

Tue 21 April 2026

East Midlands

▶ **Nottingham**

Nottingham Forest FC

Wed 22 April 2026

Join us in person or online:



**Scan to find your event
and book your place**

Progress Update

Joseph Martin

Head of Connections Customer Contract
Management

Connections Reform | Contracts Updates

CMP434 Window (Enduring)

- The dates for the first CMP434 window have not yet been confirmed. NGED is proactively engaging with NESO to open the window as soon as reasonably practicable

Signing Period

- Projects will have 30 days to accept their variations. If a Gate 2 variation is not accepted within this period, the Gate 2 variation will be revoked and a Gate 1 notice issued

Gate 1 Notifications

- Gate 1 notifications for Self Terminations, Failed Initial Checks or No Evidence Provided are being processed
- Gate 1 notifications for Failed Strategic Alignments will be sent once received from NESO
- Gate 1 notifications for projects who elect to not proceed with Gate 2 will be issued continually thru to end of Connections Reform programme
- Hard copies being sent to company registered address
- Refunds of Capital Payments (not spent) and Securities (if applicable) will be issued within 6 weeks of notice being sent

Gate 2 Variations

- Template will be shared on the NGED website shortly
- Gate 2 protected variations will be sent in line with NESO timelines and no later than end of May 2026

Connections Reform | Project Commitment Fee (CMP448)

What is the Project Commitment Fee? (PCF)

- The PCF applies to projects who have a signed Gate 2 outcome but have not met User Progression Milestone 1 (submit statutory consent and planning permission) – **once you have submitted this the PCF is not applicable**
- The PCF is in addition to any required transmission securities
- The PCF initially dormant until triggered
- The trigger has been set to 6.5GW of network capacity terminated, across Distribution and Transmission
- When the trigger is activated projects must post a security against the PCF following receipt of a Gate 2 offer or activation by NESO, which will remain in place until the developer demonstrates Milestone 1 (submit statutory consent and planning permission) has been reached.
- If activated the security requirement is as follows:
 - £2,500 per MW of capacity
 - Increases by £2,500 per MW every six months
 - Capped at £10,000 per MW for each individual project
- You will see in the Gate 2 variation the PCF as a £0 / NA cost

Policy & CMP434 Update

Kyle Smith

Connections Reform Implementation

Manager

Connections Reform Programme | Policy, Code & CMP434 Update



Ofgem Demand Connections Reform Call-for-input

- Ofgem has launched a Call for Input to reform the demand connections queue, addressing the challenges posed by the unprecedented surge in demand connections. Call for input closed on the 13th March. We will keep you updated with how this progresses



Demand

- Proposed changes to Minimum Information for demand applications forms part of changes to the RIGs which is out for consultation. Deadline to respond is 30th March
- DESNZ have released a consultation looking at how to accelerate strategic demand connections. Deadline to respond is 15th April. We will continue to advocate for development of mechanisms that support DNO connected customers



Code Modifications

- **DCP 461-** Reducing the Impact of Transmission Distribution Charges- NGED led, consultation closed on 28th November
- **CMP 460-** Improving Transmission Connection Asset Charging- currently in workgroup stage
- **DCP 464-** IDNO Connection Applications: Treatment of Existing Assets



Third Party Works

- NGED continuing to work with NGET, NESO and the other DNOs to ensure Third Party Works projects are updated in a timely manner throughout the reform offer period.



CMP434

- NESO Methodology consultation is now live on the updates they are consulting on for CMP434 window
- NGED are working with NESO, other DNOs and TOs on the timing of the CMP434 Window

Technical Limits

Joseph Martin

Head of Connections Customer Contract
Management

Connections Reform | Contracts Updates

CMP435 Technical Limits Projects

- Only customers with a live Technical Limits contract **and** a Gate 2 notification are eligible
- Gate 1 projects are **not eligible** for Technical Limits
- Contracts will be delivered in accordance with the phasing dates outlined above. Timelines are determined by the **firm connection date**, rather than the technical-limits *non-firm* connection date, in line with the CMP435 methodology
- Projects with a Technical Limits contract may connect ahead of the delivery of their Gate 2 variation at their own risk
- NGED is exploring options to accelerate the issuance of technical-limits offers to provide clarity to customers at the earliest opportunity
- NGED will open a new Technical Limits application window **after the Connections Reform Programme has concluded**. This will allow any unaccepted Gate 2 offers to be included in the engineering assessment to understand advancement potential
- We are working with NESO to confirm that all Gate 2 projects connecting to an existing GSP not subject to fault level constraints will be eligible

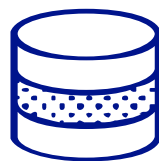
Consultation Update

Sarah Kenny-Levick

Head of Reform Implementation

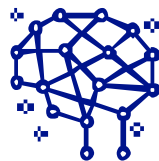
Ofgem Demand Consultation Update

DESNZ consultation due back 15th April 2026 – focussing on ‘Plan’ workstream in the overall demand programme



Recognise and Prioritise (Curate)

Ensure large embedded demand projects are clearly identified, credible, and prioritised consistently across industry frameworks so suitable network capacity is allocated to the schemes that are ready and strategically justified.



Whole System (Plan)

Link short-term tactical connection and queue rules with longer-term strategic and spatial planning (e.g. CP30) so transmission and distribution capacity, investment and demand growth are planned coherently across time horizons.



Optimise Connections (Connect)

Use system planning and flexible connection arrangements to let customers connect sooner while managing network risk and delivering works in parallel.

Demand Reform Programme

NGED has identified the workstreams needed to deliver a complete reform programme, aligning industry frameworks with generation

Proposed NGED initiative	Urgency (months)			Leading Org	Status	Channel / fix identified (RAG)
	0-3	3-6	6+			
Recognise & Prioritise (Curate)						
Large ED category	X			Ofgem		Demand Connections Reform (data-centre focus); needs broader scope
Recognise ED in TMO4+	X			N/A		No framework yet; embedded demand workstream in progress
Large ED strategic prioritisation		X		DESNZ		CAS exists; needs clear route + embedded-demand scope
Large ED Entry Requirements	X			ENA		Progressing under ENA Demand Working Group
Large ED readiness	X			Ofgem		Readiness consulted; needs extension to distribution demand
Large ED financial mech	X			Ofgem		ENA working group
ED Register		X		Ofgem		Progressing under E2E
Plan Whole System (Plan)						
Combined T&D queue		X		N/A		No programme/owner for a combined T&D queue
T&D capacity limit	X			ENA		Progressing under ENA Demand Working Group
Link RESP & Week24			X	NESO		ESP/SSEP alignment idea noted; delivery route unclear
Data Centre CP30 equivalent		X		DESNZ		Govt strategic-planning concept in consultation but needs network review
Optimise Connections (Connect)						
Formalise BO7 & Week 24			X	N/A		No fix cited; needs NESO/DNO code + contract changes
ED Connect & Manage		X		N/A		Not yet identified for development
Ramped, non-firm & flexible connections			X	N/A		Not yet identified for development

DSO Update – Curtailment Estimator

Will Topping

DSO Curtailment Team Lead

Curtailment Estimator

The Curtailment Estimator self-serve portal allows users to produce curtailment estimate reports, with the ability to alter variables, for non-firm connections.

We will be seeking your feedback on the initial functionality after its release on 30th March 2026 and we'll be releasing new features based on your feedback throughout the Spring/Summer.

This tool is currently in Beta and only available for users with a scheme which has received a Gate 2 outcome following Connection Reform. You will need to enter your enquiry number and Offer issue date, which can be found within the original Connection Offer letter from National Grid Electricity Distribution (NGED).

BETA

Curtailment Estimator

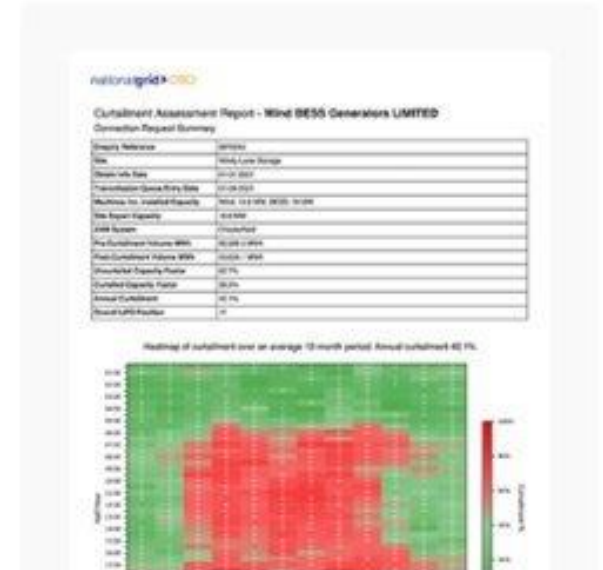
Explore the estimated level of curtailment for your distributed energy resources such as wind, solar PV or battery storage due to constraints managed by NGED.

This tool specifically focuses on the anticipated curtailment a scheme may be subject to due to **Active Network Management (ANM)** and its dependency on the queue ahead in the Last In First Out (LIFO) stack.

→ Get started

→ Learn more

While this tool is in Beta, you can generate up to 10 reports per day.



Curtailment Estimator

The first release is for schemes that have achieved a Gate 2 Connections Reform outcome.

Enquiry number and original offer issue date from the Connection Offer are required to retrieve scheme details.

← Back **Curtailment Estimator** Help Close

1 Retrieve site details 2 About the site 3 Connection queue 4 Disclaimer

Retrieve your site details

Site overview

Enquiry number
Please enter your enquiry number to retrieve your site and generation details.
You can find this information in previous communications.

Original offer issue date
Enter the date shown on your connection offer letter.

Continue Cancel

Curtailment Estimator

Scheme details shown for review

Export capacity can be reduced if desired to see the impact on the level of curtailment.

← Back **Curtailment Estimator** Help × Close

1 Retrieve site details **2 About the site** 3 Connection queue 4 Disclaimer

About the site

If there are any data discrepancies relating to your site information below, please reach out to nged.curtailment@nationalgrid.co.uk.

Site details

Power generating facility name	Enquiry number	NESO counter signature date
Cider Farm	9999998	01/10/2026

Connection details

Connection voltage level	Grid Supply Point	Connection node
33 kV	Seabank	71302
Maximum export capacity	DER type	
15 MW	Solar PV	

Would you like to reduce the export capacity of your site?

[Maximum export capacity](#)

Please note this will only change the export capacity and will cap the installed capacity accordingly.

 MW

Continue Cancel

Curtailment Estimator

The accepted not yet connected queue is shown ahead of the selected scheme. These can be toggled off or on to help understand the impact of attrition to the connection queue.

If a scheme has multiple fuel types these can be switched out independently.

- ✓ Retrieve site details
- ✓ About the site
- 3** Connection queue
- 4 Disclaimer

Connection queue

The following Distributed Energy Resources (DER) are not yet connected, and are ahead of you in the connection queue, displayed in a random order. You can use the 'include in study' toggles to consider attrition of these DER, which may change the curtailment assessment report for your scheme.

ⓘ Within the Beta release Technical Limits will be applied within the analysis. Future releases will allow Technical Limits to be toggled in/out as required.

Current situation

Distribution LIFO position

26

Transmission LIFO position

4

Site	Fuel type	Max export capacity (MW)	Connection node	ANM type	Include in study
Site 1	Solar PV	16.9	21044	No ANM	<input checked="" type="checkbox"/>
Site 2	Solar PV	5.49	7276	No ANM	<input checked="" type="checkbox"/>
Cider Farm	Solar PV	15	71302	Distribution & Transmission	Included

Continue

Cancel

Curtailment Estimator

The disclaimer is shown to give context for the report that is produced by the Curtailment Estimator, after which the analysis is triggered.

- ✓ Retrieve site details
- ✓ About the site
- ✓ Connection queue
- 4** Disclaimer

Disclaimer

Version: 1.0 - Effective from Wed, 1 December 2025

The user acknowledges and agrees that the curtailment assessment produced by the DSO viability study tool is provided strictly for illustrative purposes only. The tool and any reports or data generated by it are not intended to, and do not, create or imply any contractual relationship between the user and NGED. In particular, the use of this tool and the information provided by it sits outside of the Distribution Connection and Use of System Agreement (DCUSA) Schedule 2D.

The results and data provided by the tool are intended to provide an indication of the annual energy curtailment and are based solely on the assumptions selected by the user. NGED makes no representation or warranty, express or implied as to the accuracy of the results for any purpose. Due consideration and recognition of the fact that these results are an illustration only should be given when using these results for the financial appraisal of projects.

The illustrative results produced by this tool are not a substitute for, and must not be treated as the same as, the official curtailment estimate report provided by National Grid Electricity Distribution issued as part of the connection offer. National Grid Electricity Distribution does not guarantee that the assumptions in this tool will align with those selected by the National Grid Planning and DSO teams and accepts no liability whatsoever for any loss, damage or expense arising from the use or reliance on the tool or its results.

The viability study tool only uses essential cookies to ensure proper functionality. When using the tool, we store assumptions and usage information linked to your username to assist in performance, understand usage and to enhance your experience. We are committed to protecting your privacy and adhere to a strict privacy policy to ensure that your data is handled responsibly and securely.

Accept & Continue

Decline & Leave

Curtailment Estimator

An email will be sent to the user containing the report after a couple of minutes.

Throughout, there is the Help button in the top right hand corner. This contains a link to the methodology document, which includes all the assumptions contained within the tool, and a point of contact to provide feedback and development suggestions.



Your report is being generated

Your curtailment assessment report is being prepared

It should take less than 5 minutes

[+ Create new scenario](#)

While this tool is in Beta, you can generate reports

Discover what's coming after beta

We are actively working to make this tool better and already have a set of new features lined up for future releases.

[→ Find out more](#)

How can we help?



User Guide

All you need to know to use the Curtailment Estimator

[Download](#)

Contact us

Our Curtailment team are always happy to advise and help where possible. We aim to respond to emails within 48h.

[Send us an email](#)

Connected generators in the LIFO queue have already been taken into account in this analysis and are not included in the table below.

DER technology	Distribution Capacity (MW)	Distribution No of DERs	Transmission Capacity (MW)	Transmission No of DERs
Solar PV	0	1	0	1
Onshore wind	112	1	112	1
BESS	0	1	0	1
Other	20	5	20	5

Curtailment Assessment

ADM System	Pre-curtailment volume MWh	Post-curtailment volume MWh
Ironbridge 132 kV S Sin	6,925 MWh	937 MWh
Uncurtaild capacity factor	21%	Annual curtailment
	2.8%	86.5%

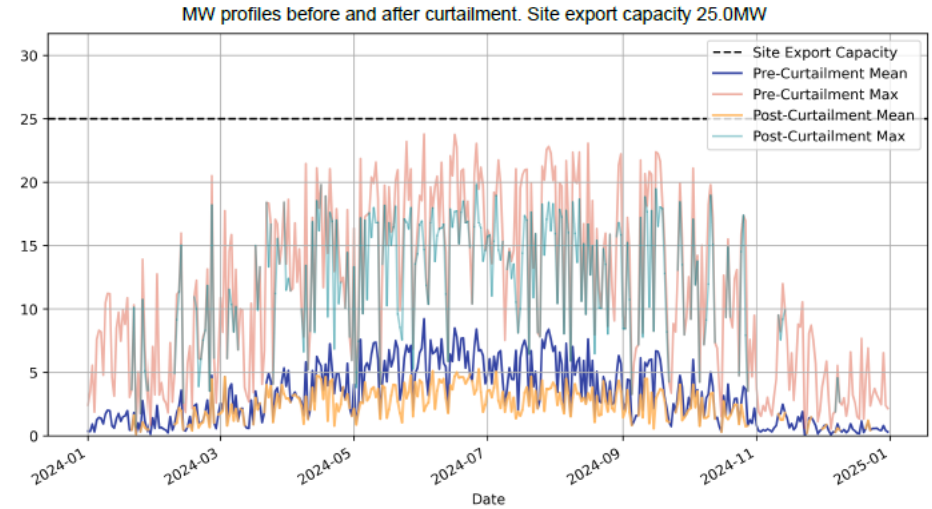
Heatmap of curtailment over an average 12-month period



Curtailment Estimator

The report has various ways to demonstrate the level of curtailment a scheme might be subject to.

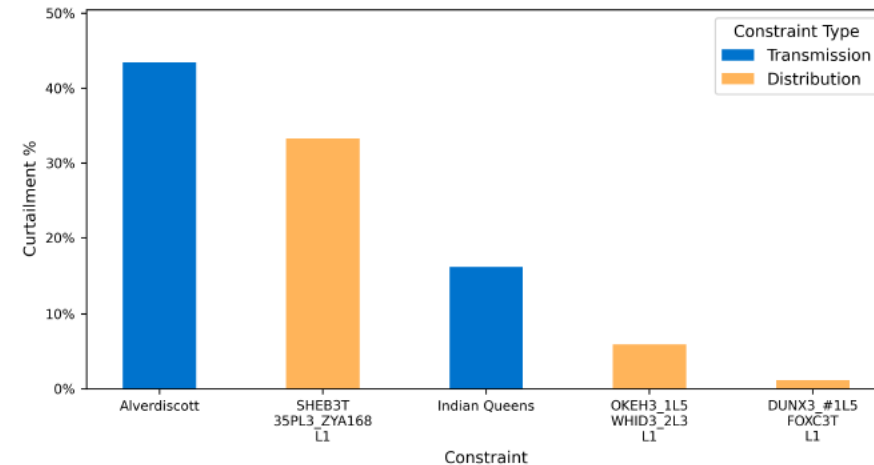
A caveat is included to identify that this report has been produced by the Curtailment Estimator, rather than sent directly from NG DSO.



Curtailment Per Constraint

Worst five constraints:

Constraint	Constraint Type	Curtailment Volume (MWh)	Curtailment Percentage
Alverdiscott	Transmission	3977	43%
SHEB3T, 35PL3_ZYA168, L1	Distribution	3044	33%
Indian Queens	Transmission	1474	16%
OKEH3_1L5, WHID3_2L3, L1	Distribution	543	6%
DUNX3_#1L5, FOXC3T, L1	Distribution	107	1%



Curtailment Estimator

Future features include the ability to create a new assessment for a generator anywhere on our network, with multiple fuel types, saving previous studies and viewing the report on the portal before downloading it.

The location of a new connection can be selected by drop down, referencing single line diagrams or NG DSO's new CIM Explorer (cim.squid.energy)

- ✓ New or Existing
- 2 About the site
- 3 LIFO queue position
- 4 Results

About the site

Site overview

Power Generating Facility name

Site Postal Address

Use postcode or address details.

Find address Add address manually

Licence area

Connection information

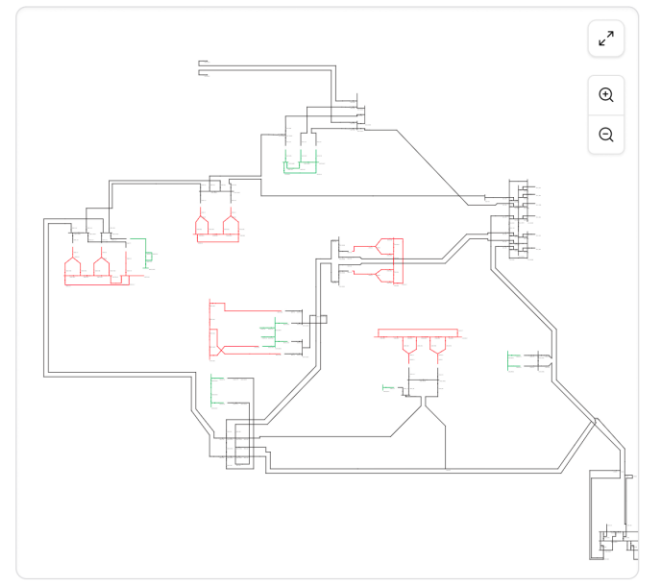
Connection voltage level

Grid Supply Point

Bulk Supply Point

Connection node

Maximum export capacity

MW

Q&A Session

Q&A



David Tuffery
Head of System
Access Reforms



Sarah Kenny-Levick
Head of Reform
Implementation



Joe Martin
Head of Connections
Customer Contract
Management



Kyle Smith
Connections Reform
Implementation Manager



Mike Kaveney
Primary Network Design
Manager (South Wales)



Will Topping
DSO Curtailment Team
Leader



We'll be answering pre-submitted questions then moving onto live questions.
If you see a question submitted by another attendee which you would like to hear answered, please use the **vote button** on the question

Presubmitted questions

Question Theme	Question	Answer
Programme Overview	<ol style="list-style-type: none">1. What's happening with Advancement Fees?2. When are G1 offers being issued?3. When do NGED think the next NESO application window will open?4. Are you able to share what an NGED G2 Variation document will look like?	<ol style="list-style-type: none">1. Advancement Fees: Where a customer has advanced the fee will be due. NESO is reviewing whether fees should apply with acceleration within phase.2. G1 Offers: Gate 1 unilateral variation notices are issued to projects not meeting G2 criteria; no acceptance is required.3. NESO Application Window: Future windows are planned to be biannual; NESO will announce dates on their website.4. G2 Variation Document: The G2 Variation replaces specific sections of your original agreement (Section 6/8 replaced with Section C, Section 3 replaced with Section A, Payment clauses replaced with Section B). We will publish the variation template on our website ASAP.
Programme Overview	Is there any update on timeline for embedded assets @132 kV of 280 MW?	Large embedded projects (100MW+) are assessed directly by NESO and will receive their outcomes from NESO. These projects follow NESO's assessment process. Contact NESO for specific timeline updates.
Reporting Schedules	Will NGED be able to share a listing of how many offers for each of the categories (2026/27 protected, Gate 2 Phase 1, Gate 2 Phase 2 and Gate 1) that need to be issued in total and update how many from each have actually been issued on a regular basis. This would provide a degree of comfort on the progress that is being made as we start to move through the phase of having new offers being issued.	The ENA have agreed a set of KPI data and we will be reporting against this. We are working with industry to align on the external publication of this data.

Presubmitted questions

Question Theme	Question	Answer
Technical Limits	Can you confirm that projects connecting under technical limits in 2026/2027, but who may now not receive their Gate 2 offer until after their contracted connection date, will still be able to connect at their contracted date? e.g., project due to connect under tech-limits in Q2 2027, but Gate 2 offer not due until Q2 2027 as firm date is 2034.	Yes. Per FAQ 10.4, projects with a Technical Limits offer may continue to build and connect on a non-firm basis under their existing contract while awaiting an updated Gate 2 offer. Where construction is already underway, connection dates are expected to be honoured. However, customers should review their business case and proceed at their own risk as there are small risks including changes to POC, higher network costs, and changes to curtailment.
Technical Limits	Could you kindly elaborate on the Technical Limit connection if the energisation date delay?	For projects with Technical Limits offers where construction is already underway, connection dates are expected to be honoured. For other projects, milestones may be adjusted to reflect engineering deliverability. If delays are outside your control, NGED may treat these as exceptional issues where supported by evidence.
Gate 1	If I have a Gate 1 project and now want to change my RLB from that which was submitted in the CMP435 window, is this possible? To clarify, the RLB submitted was inside the ORLB, and the revised RLB for the CMP434 window when capacity is next available will also be inside the ORLB submitted. Also, how do we submit for a revised connection agreement prior to the CMP434 window to get costs updated?	Per the allowable changes policy, after signing a G2 offer, you can request changes through the CMP434 window. For G1 projects, per G1 FAQ Section 3, you have Option (a): DNO re-assessment prior to NESO Evaluation, or Option (b): NESO Evaluation prior to DNO re-assessment. Please refer to the ENA Gate 1 Guidance Document for the process of converting G1 to G2. Once back on a G2 your contract can be varied along with the allowable changes policy. Please contact box.ConnectionsReformNGED@nationalgrid.com for specific guidance.

Presubmitted questions

Question Theme	Question	Answer
Gate 2 Offers	Please share the latest timescales and the documents that will be issued as part of variation offers to the Gate 2 allocated projects.	
Gate 2 Offers	Have NGED issued any Phase 1 Offers yet?	NGED have only issued Gate 1 offers to date. NESO's programme indicates: All 2026/2027 protected offers are expected by end of May 2026. All Phase 1 offers are expected by mid-November 2026. These timelines align with NESO's Connections Reform Timeline and may change. Check NESO's website for the latest timeline.
Gate 2 Offers	When can we expect Gate 2 offers for projects with technical limits (non firm) connecting in 2027, but firm connection date is post 2030?	Phase 2 offers (which would include projects with firm dates post-2030) are expected by mid-March 2027. Projects with Technical Limits offers may continue to build and connect on a non-firm basis under existing contracts while awaiting G2 offers. Where construction is underway, connection dates are expected to be honoured. Per FAQ 10.1, customers with existing Technical Limits will receive an update with a new curtailment report alongside their new firm Gate 2 variation.
Gate 2 Offers	When will NGED be providing updates on GSPs no longer triggered and whether non-firm enduring connections at the original GSPs are going to be a viable outcome for Phase 2 projects?	A new ENA Technical Limits working group has been established to agree an enduring, cross-industry approach to non-firm access. While we expect minimal changes that required new GSPs, this cannot be finally confirmed until the transmission studies are complete.

Presubmitted questions

Question Theme	Question	Answer
Gate 2 Offers	Have NGED been able to offer any projects an improved POC following G2TWQ?	<p>Yes, in some specific cases we do expect to issue Gate 2 offers with an improved Point of Connection (PoC). Typically this will be as a result of other projects being issued a Gate 1 Offer which will release capacity on the distribution network either in terms of thermal headroom or other design considerations such as <i>Engineering Recommendation P18 - Complexity of Circuits</i>.</p> <p>For example, one Gate 2 Phase 1 project in South Wales currently requires the installation of a dedicated 33kV circuit to the closest Bulk Supply Point (BSP) substation located several kilometres away from the Customer's Premises. However, on the basis that another project that had secured a tee-off from a nearby 33kV overhead line is to be issued a Gate 1 Offer, we now expect to reallocate this Point of Connection (PoC) to the Gate 2 project. This will result in a significant reduction to the Customer's Connection Charge and also allow the Connection Works to be completed in a shorter timescale.</p> <p>Another example is in the South West where following the issue of a Gate 1 Offer to another project, we expect to optimise a Gate 2 project by changing the connection arrangement from a 132kV Loop-in to a Single Circuit Tee-off. While strictly speaking the Point of Connection (PoC) is the same point on the distribution network, the change to a single circuit tee-off will reduce the Connection Charge and land footprint associated with the Connection Point Substation.</p> <p>For 26/27 protected projects the PoC will not change. For the majority of Phase 1 and Phase 2 projects we expect the changes to be a reduction in the need for a previously identified new GSP, rather than proposing a new PoC under the existing GSP.</p> <p>Gate 2 Offers confirm the Point of Connection, except for some cases connecting into a new GSP where the location has not been defined yet. For 26/27 protected projects, NGED does not expect POC to change and for the majority of phase 1 and 2 we expect the changes to be a reduction in the need for the previously identified new GSPs rather than new PoC for existing GSPs.</p>

Presubmitted questions

Question Theme	Question	Answer
Gate 2 Offers	D-Projects with 2028-30 non-firm dates but 2031+ firms date means their Gate 2 variation offers come in really late(Q4 2026/Q1 2027). This is a significant issue as these project must go through FiD before the Gate 2 offer being ready. We appreciate this is a known issue and you are working on it. But it is really important that something formlised to progress these projects.	This concern is acknowledged. Per FAQ 6.3, Phase 2 offers are expected by mid-March 2027. Per FAQ 6.6, customers can request earlier connection dates via a mod app once offers are issued. Additionally, if capacity becomes available due to Gate 2 projects withdrawing, projects could be re-allocated capacity subject to the CNDM criteria. For queries, contact box.ConnectionsReformNGED@nationalgrid.com
CMP434 Windows	1 When will the first CMP434 Gated Application Window be? 2 When will be the earliest that the availability of any spare headroom capacity for different technologies following CMP435 process will be confirmed?	1 NESO will announce the date for the first CMP434 connection applications window on their website. The future windows haven't yet been confirmed by NESO but are planned to be biannual. 2 If a T Zone is undersupplied, capacity may be available for customers to apply for during the CMP434 window. NESO publishes the latest timeline on its website.

How did we do today?

Your Feedback is important to us

How did we do on today's webinar?

You will see a Poll appear in the chat for this meeting.

Please take a moment to let us know how you've found the session today.

Voting is anonymous and will help us to continually improve the experience for you.

More information



See you on 23 April 2026.

Please follow this link to register

For further information, useful materials or support:

nationalgrid

<https://connections.nationalgrid.co.uk/connections-reform/>
box.ConnectionsReformNged@nationalgrid.com



<https://www.neso.energy/industry-information/connections/connections-portal>
box.ConnectionsReform@neso.energy

national**grid**

Thank You