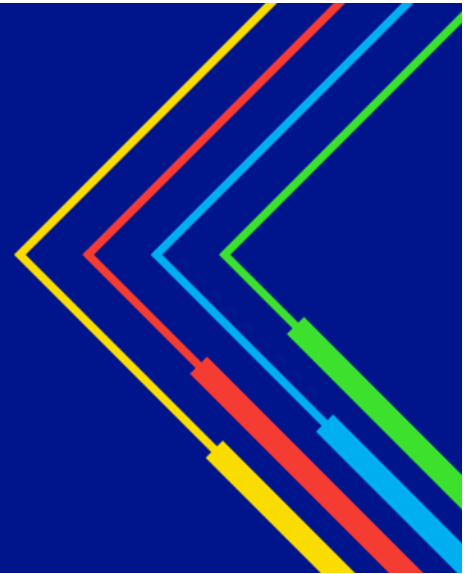


Charging for DSR Services



To ensure that NGED meet the requirements of the CIC Code of Practice where an ICP elects to work to NGED DSRs a service has been made available for ICP staff to be authorised under Option 2 at HV or LV.

NGED have provided an additional Option for ICP's to undertake HV operational activity on the NGED existing network under Option 4.

Where NGED are requested by an ICP to provide DSR services for Option 2 or Option 4 NGED will recover all its reasonable costs for the provision of the services.

NGED shall recover any costs incurred for carrying out Safety Management System office based checks. This will include any costs for travelling to an ICP's office. Where site audits are required travelling costs will also be chargeable including the time taken to carry out the audit and the necessary clerical functions for the recording of information in the NGED Crown system.

There will be a requirement for refresher site audits and for the ICP staff to complete Computer Based Tests (CBT) to maintain their Authorisations.

Additional charges will apply for any refresher audits and the administration of the process.

A table has been provided detailing the various requirements that will need to be met depending on the Option selected. The table does NOT include costs for attending a NGED training course. Where further training is required by ICP staff following an assessment with a NGED examining officer a request for training school courses can be obtained from the Training Team www.nationalgrid.co.uk/training

The costs set out below are based on NGED's current rates which may be subject to change from time to time – any activity subject to a charge shall be charged at the appropriate rate as published at the time such activity is undertaken.

An example of costs are detailed below:

Full Option 2 validation, authorisation and field check = £4,318 plus VAT (35hrs @ G8 + 2HRS @ G9)

Full Option 2 validation, authorisation and field check = £3,163 plus VAT (37hrs @ G7)

Annual authorisation CBTs and field check = £1,563 plus VAT (13HRS @ G8)

Annual authorisation, CBTs and field check = £1,111 plus VAT (13HRS @ G7)

Whilst NGED has provided details of typical durations for activities, these have been provided in good faith in order to enable a reasonable estimate to be made of the applicable charges, and are not limits on the amount of time that an activity may take or the resulting charges.

The actual charges for each activity will be calculated based upon the time taken (rounded up to the nearest hour).

| CiC Option | NGED Staff Involved | Typical Duration (Hours) | Cost per hour |
|---|---|--------------------------|---------------|
| Option 1 | | | |
| SMS Check | Operational Safety Advisor | 16 – 40 | |
| Operational Site Checks (Per Stage) | Appropriate Authorised SAP or Examining Officer or Operational Safety Advisor | 4 - 8 | |
| Operational Site Check (Random) | Appropriate Authorised SAP or Examining Officer or Operational Safety Advisor | 4 - 8 | |
| Differences identified checked against DSR. | Operational Safety Advisor | 2 | |
| Option 2 | | | |
| Desk top gap analysis | Appropriate Examining Officer | 2 | |
| Initial interview | Appropriate Examining Officer | 2 | |
| Produce training requirements | Appropriate Examining Officer | 2 | |
| Produce experience requirements | Appropriate Examining Officer | 2 | |
| Check of non NGED training is equivalent to NGED training | Safety & Training Manager | 2 | |
| CBT | Appropriate Examining Officer | 2 | |
| Authorisation interview | Appropriate Examining Officer | 4 | |
| Switching field test | Appropriate Authorised SAP or Examining Officer or Operational Safety Advisor | 4 - 8 | |
| Certificate preparation | Appropriate Examining Officer | 1 | |
| IO check and issue of authorisation certificate | Issuing Officer | 2 | |
| Annual Field check | Appropriate Authorised SAP or Examining Officer or Operational Safety Advisor | 4 - 8 | |
| Annual CBT | Appropriate Examining Officer | 2 | |
| Option 4 | | | |
| SMS Check | Operational Safety Advisor | 16 – 40 | |
| NGED Operational Briefing & Test | Appropriate Examining Officer | | |

| | | | |
|------------------------|---|-------------------|--|
| Operational Site Check | Appropriate Authorised SAP or Examining Officer or Operational Safety Advisor | 5 x 4/8 (Minimum) | |
| Deficiency resolution | DM & SM | 3 | |
| General | | | |
| Admin & Records | Safety Assistant | | |